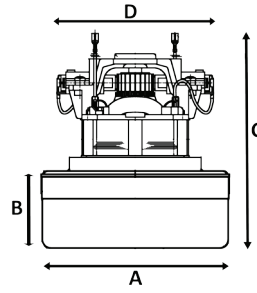


Code

Motors



Motor Dimensions

Skid Qty

d: "FB" = Fan Base, "P/Bypass" = Peripheral Bypass, "T/Bypass" = Tangential Bypass,
"T.C/O" = Thermal Cut-Out

1 Stage 240v

33300666



Flowthru 240v, 2000w Suits Sonixx 2400 Cyclonic, Hoover 5014 Pets, Alternative for Wertheim 5030, 129mm



129 40 122 120

33300667



Flowthru 240v, 1800w Suits Hoover Aura II, 5001, W100, H501200, H5012

135 45 129 123

33300671



Flowthru 240v, 2000w Suits Hoover Freemotion 129mm

129 46 134 133

33300675

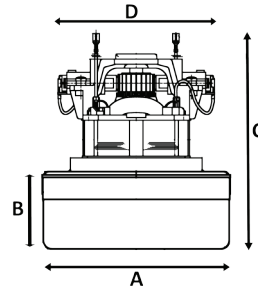


Flowthru 240v, 1200w Suits Hoover 5012PH, 5015PH, 5017PH, 5019PHH

107 27 120 106

Code

Motors



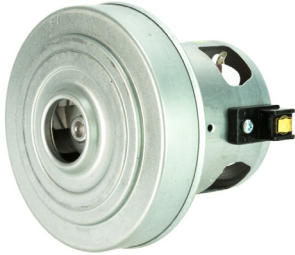
Motor Dimensions

Skid Qty

A B C D

1 Stage 240v (cont)

33300683



Flowthru 240v, 2000w Suits Hoover 2000 H2000TP

126 38 128 122

33300684



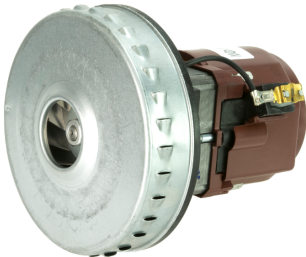
Flowthru 240v, 1500w Suits Hoover 7011PH

33300690



Flowthru 240v, 1200w Suits Pullman Pull10LD

33300706



Bypass 240v, 1300w Suits Pullman WC22LCR

34100035

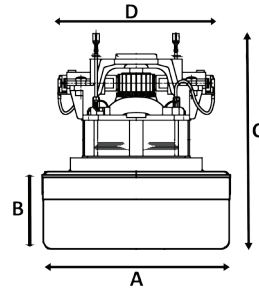


Bypass 240v, 1200w Suits Workhero 20L & 60L Wet & Dry, Pullman 20L & 60L Wet & Dry

144 51 144 123

Code

Motors



Motor Dimensions

Skid Qty

A B C D

130 44 120 86 **112**

133 40 124 128

133 45 135 115

129 51 129 128

130 44 120 86

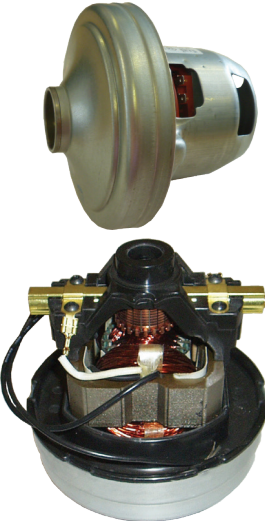
1 Stage 240v (cont)

34100039



Flowthru 240v, 1300w Suits Valet VBC, Beam, Nilfisk GD5 Backpack, Domel 440.3.405-5

34200009



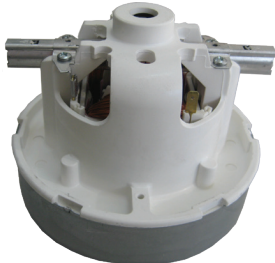
Flowthru 240v, 1000w, Ametek 119451, VC9001, MD2000

34200030



Flowthru 240v, 1500w Suits Dyson DC02, DC 5, 8, 11, 14, 19, 20, 21, 29 Hoover Core, Wertheim X3000, 133mm

34200031



Flowthru 240v, 1200w, Ghibli, Pullman AS5 Ver 2, Pullman PC6, Nilfisk GM200-500 series, 130mm

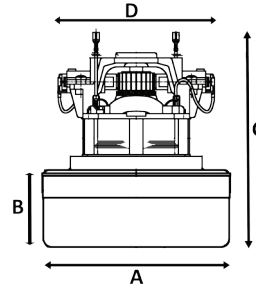
34200187



Flowthru 240v, 2100w Suits Hoover W4430, W4000

Code

Motors



Motor Dimensions

Skid Qty

1 Stage 240v (cont)

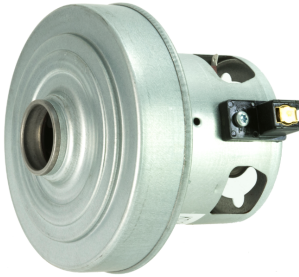
34200190



Flowthru 240v, 1500w Suits Hoover HB5030L

122 35 109 123

34200194



Flowthru 240v, 1350w Suits Wertheim W2000

126 42 120 118

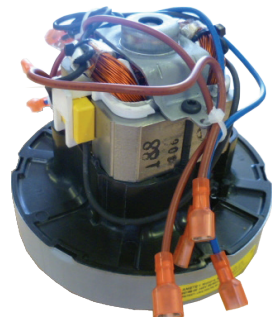
34200195



Flowthru 240v, 1200w Suits Hoover 7010, 7010PH, 3014

106 36 107 120

34200205



Flowthru 240v, 1300w Ametek 122188-00 Suits Hako Rocketvac XP

134 33 114 87

34400147

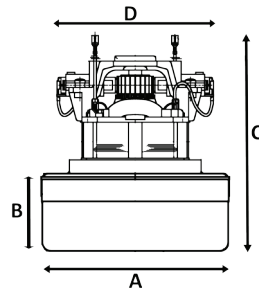


Flowthru 240v, 1500w Suits Hoover Hygiene VC358, Powermax H2000, H1800, Wertheim 4410, 4430, 129mm

129 48 120 130

Code

Motors



Motor Dimensions

Skid Qty

1 Stage 240v (cont)

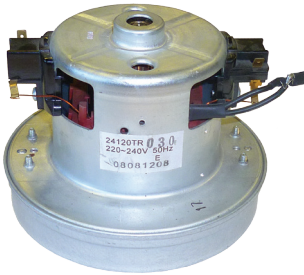
34400212



Flowthru 240v, 1900w Suits Wertheim W5035, W6030, W6035, W7000

106 36 112 107

34400213



Flowthru 240v, 1200w Suits Pullman AS4, Pullman PC4

129 32 108 123



34400222



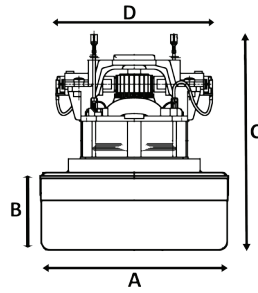
Flowthru 240v, 1350w Domel 463.3.409 Suits Sauber Intelligence, SC100, SI-200, SE-400, PV900, W900

118 38 114 90



Code

Motors



Motor Dimensions

Skid Qty

2 Stage 24v

34300003

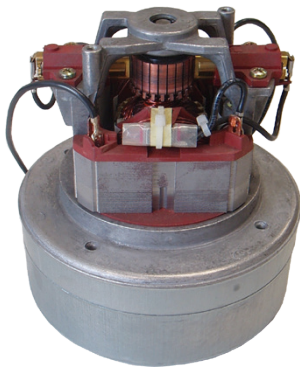


T/Bypass 24v, 400w, Ametek 116157, 145mm

145 68 165 79

120v

34200181



Flowthru 120v, 1000w, Domel MKM3430-2 with Thermal Cutout

145 60 152 120

2 Stage 240v

33300672



Bypass 240v, 1200w Suits Pullman M7

136 44 131 128

33300678



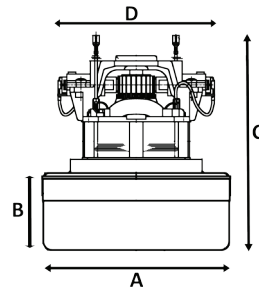
Flowthru 240v, 1100w, Fan Base Ametek 119559-00 Suits Older Pullman AS5 ver1, Pacvac Backpacks, Superpro 700/Superpro Micro, Hako Supervac 50, Miele 7200 series, Pullman 2000GH, Moder Day VC9001, VC9009 Dog & Cat Carbon brush Ametek: 33300006, 145mm

145 66 159 120



Code

Motors

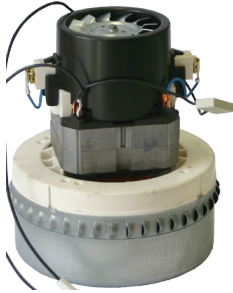


Motor Dimensions

Skid Qty

2 Stage 240v (cont)

34100001



P/Bypass 240v, 1000w, (UNIX6), Domel MKM7569-3 Suits Origin BV200, Pullman PV 9/14, Ghibli As400, AS59, Wertheim/Pullman SEM1200, Kerrick 290C, 270J, Pullman CB15, CB60, CB80, AS10, CB30
Carbon Brush: 33300005, 145mm



145 72 170 123

34100003

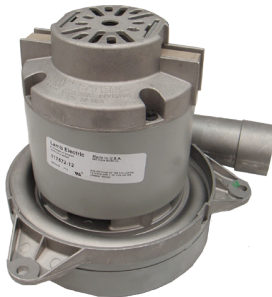


P/Bypass 240v, 1100w, Ametek: 119656-00,
Carbon Brush: 33300006, 145mm



145 69 170 120 **112**

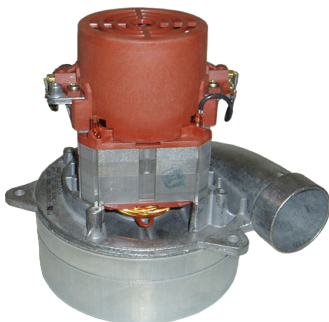
34100012



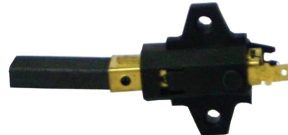
T/Bypass 240v, 1600w, Ametek: 117572-12 Suits Valet V2S, Lux Ducted V350s, Beam Ducted, 183mm

183 53 195 85

34100022



T/Bypass 240v, 1500w, Domel 491.3.707 Suits a Variety of Extraction Units & Central Vacuum Systems, Carbon Brush, Domel with Holder: 33300001, 145mm



145 56 178 79 **105**

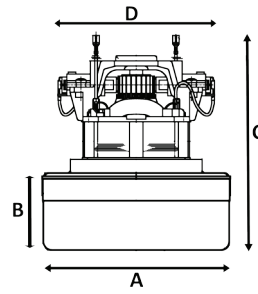
34100025



Bypass 240v, 1600w, Ducted Cleaner Hoover CV300CN

Code

Motors



Motor Dimensions

Skid Qty

2 Stage 240v (cont)

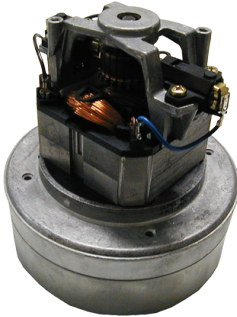
34100032



T/Bypass 240v, 1800w, Domel 499.3.701, F.B. Suits Valet, Aussievac, Astrovac, Electron, Premier Ducted Vacuums (Mounting Holes match Ametek Motors for easy Interchange) 183mm

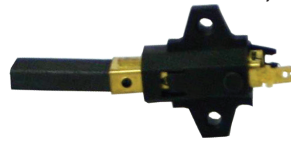
183 78 208 123 **48**

34200001

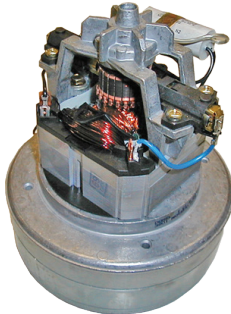


Flowthru 240v, 1100w (UNIX2), Domel MKM3528 Suits Pullman PV6, PV 10/12/15, Origin BV150, Valet VL300, VL150, V75 Carbon Brush: 33300001, 145mm

145 60 156 123 **140**

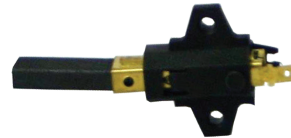


34200002



Flowthru 240v, 1100w (UNIX3), Domel MKM3570 Suits Older Electrolux 100-745, Clark Pink Pig, Polivac Wombat Carbon Brush: 33300001, 145mm

145 60 175 123 **140**

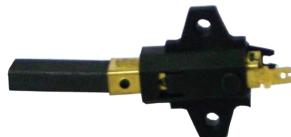


34200003



Flowthru 240v, 750w (UNI X1), Domel MKM3365, Alt for Valet VL300 Carbon Brush: 33300001, 145mm

145 60 149 121 **140**



34200008

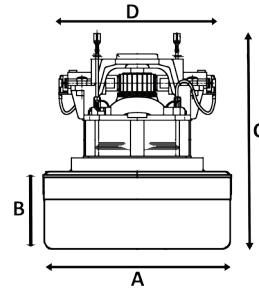


Flowthru 240v, 850w, Ametek 119623-00 Suits Filter Queen, Fantovac, Older Robotic Backpacks, 145mm

145 72 147 122 **112**

Code

Motors



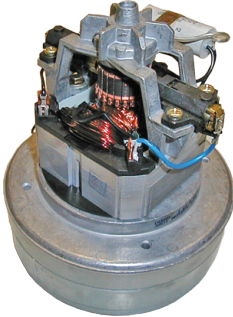
2 Stage 240v (cont)

34200010



Flowthru 240v, 1000w, Ametek 119655-0 Suits Hako Rocketvac (old style), Valet V85, 145mm

34200182



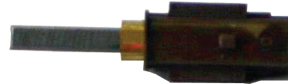
Flowthru 240v, 850w, Domel 496.3.365-2 Suits Roadrunner, Origin Sprint, JY-BP Carbon Brush: 33300001, 145mm



34300008



T/Bypass 240v, 1100w, Ametek 119625-00, For Carpet Extractors Suits Valet V3P, V1P, VB150 Carbon Brush: 33300006, 145mm



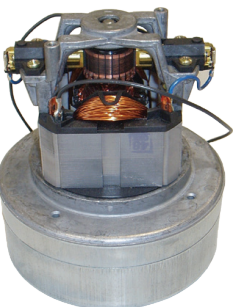
34400009



P/Bypass 240v, 1200w, Alto, WAP, Makita, Sthil Domel MKM7778-4, Festo CT22E Suits Kerrick 304, Hako Commercial Carbon Brush: 33300005, 145mm



34400110



Flowthru 240v, 1700w, Domel MKM3787 Suits Wertheim ET1400-1700 Carbon Brush: 33300001, 145mm



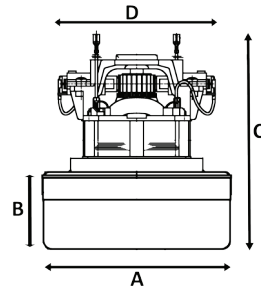
Motor Dimensions

Skid Qty

A	B	C	D	Skid Qty
145	72	156	120	112
145	60	168	123	
145	51	169	79	60
145	72	176	123	
145	60	162	123	140

Code

Motors



Motor Dimensions

Skid Qty

2 Stage 240v (cont)

34400023



P/Bypass 240v, 1100w, "Acoustic" Ametek 116296-13 Suits Silent Master SM1 Ducted, Cleancare Extraction Machines, Carbon Brush: 33300006, 145mm



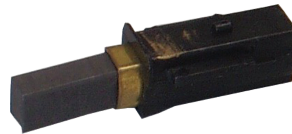
145 72 179 118 **112**

3 Stage 24v

34300006



T/Bypass 24v, F.B. Ametek 116515-13 Suits Battery Operated Extraction Machine, Carbon Brush: 33300081, 145mm



145 74 198 79 **25**

3 Stage 36v

34300005



T/Bypass 36v, 700w, Ametek 116513-13 Suits Battery Operated Machines, Carbon Brush: 33300051



145 91 198 200 **45**

3 Stage 240v

34300002

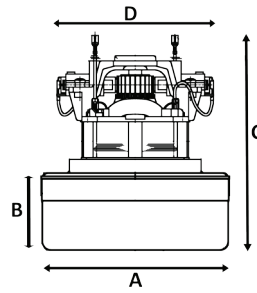


T/Bypass 240v, 1400w, Ametek 116136-00, 183mm

183 87 198 136 **24**

Code

Motors



Motor Dimensions

Skid Qty

A	B	C	D	
145	96	204	123	
145	91	198	79	45

3 Stage 240v (cont)

34400008



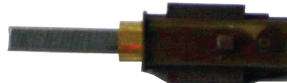
P/Bypass 240v, 1300w, Domel MKM7850-2 Suits Auskay Ducted Systems, Pullman CV2, Carbon Brush: 33300005, 145mm



34400039



T/Bypass 240v, 1100w, Ametek 116859-13, Carbon Brush: 33300006, 145mm



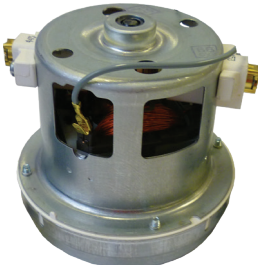
Upright Vacuum Cleaner Motors

33300166



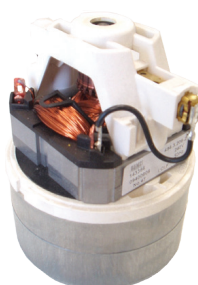
Motor Suits Hoover Core 5 & 7, U5162, U5179, U5433, U5435, U5465

34200006



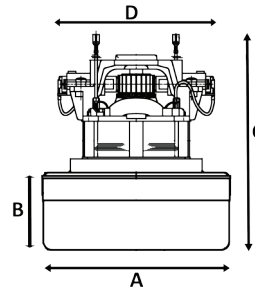
Flowthru 850w, 2 Stage, Pullman 1207

34200023



Flowthru 240v, 106mm, 1000w, 1 Stage, Domel 498.3.209 Suits Sebo, Windsor, Hako Commercial Uprights Carbon Brush: 33300005





Code

Motors

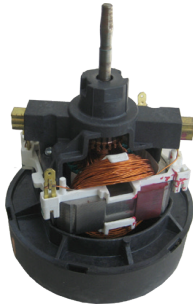
Motor Dimensions

Skid Qty

A B C D

Upright Vacuum Cleaner Motors (Cont)

34400073

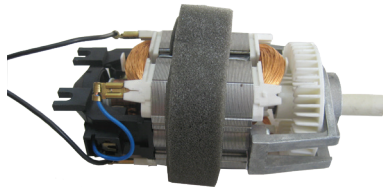


Motor Suction 1250w Hoover U6445

Motors for Powerhead

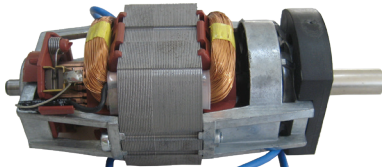
1 Stage

34400019



Powerhead Motor 240v, 100w, PB1, PB2, ESB109, PV900

34400041



Powerhead Motor 240v, 150w, Pullman 1207, CME

1 Stage (cont)

34400174

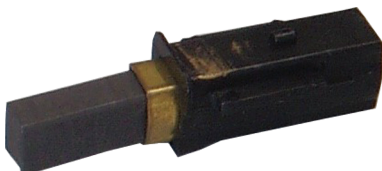


Powerhead Motor 240v, 200w, PB25 Long Shaft Whirlwind

Accessories for Motors

Carbon Brushes 24v

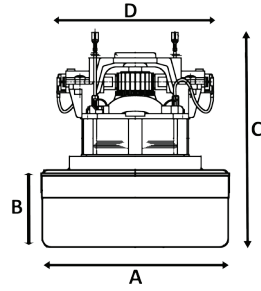
33300081



Carbon Brush 24v Suits Lamb Motors 116515-XX

Code

Motors



Motor Dimensions

Skid Qty

A	B	C	D

Carbon Brushes 36v

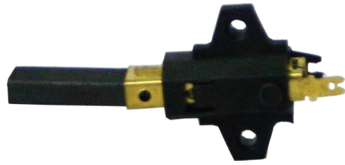
33300051



Carbon Brush 36v Suits Lamb Motors 116513-XX

Carbon Brushes 240v

33300001



Carbon Brush 240v, F.B. Domel 145mm (with Holder) Use with Motor: 34200002, 34200001, 34200003, 34200182, 34200017, 34100022

33300005



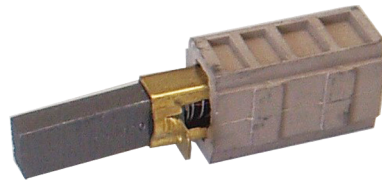
Carbon Brush 240v Suits Domel Motors Use with Motor: 34100001, 34400009, 34400008

33300006



Carbon Brush 240v, F.B. Ametek, 145mm

33300007



Carbon Brush 240v, F.B. Ametek, 183mm

Leads

33701159



Suppressor Lead Wires with EMC Capacitor Suits Domel 850w to 1200w Motors

Thermal Cutout

33200038



Thermal Cutout Suits Flowthru & Bypass Motors